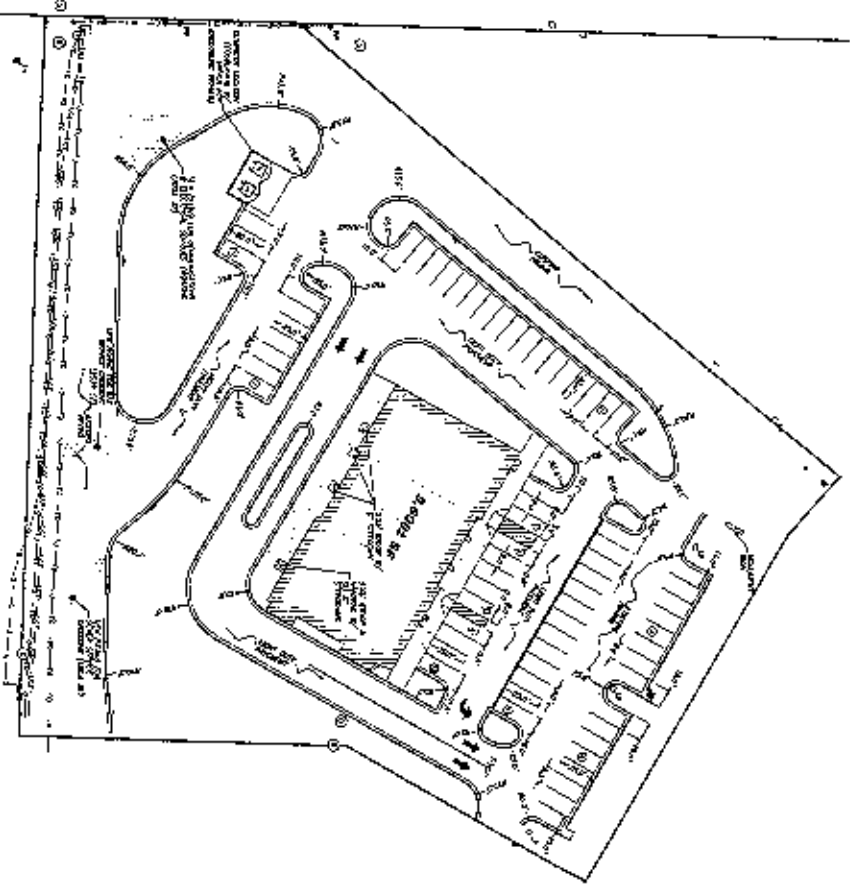




WINDCROW ENGINEERING SERVICES, INC.  
 301 EAST WINCOBIN AVENUE # 2  
 SPRINGDALE, ARKANSAS 72762  
 (501) 239-5800 • (501) 239-3698 FAX

DRUM NUMBER

SITE PLAN  
 MULTI-TENANT - BENTON, ARKANSAS  
 SECTION 0500 - GENERAL  
 SECTION 0501 - GENERAL



**LEGEND**  
 1. ALL WORK SHALL BE IN ACCORDANCE WITH THE LATEST EDITIONS OF THE INTERNATIONAL BUILDING CODE (IBC) AND THE INTERNATIONAL ENERGY CONSERVATION CODE (IECC) AS APPLICABLE TO THE PROJECT.  
 2. ALL WORK SHALL BE IN ACCORDANCE WITH THE LATEST EDITIONS OF THE INTERNATIONAL MECHANICAL AND ELECTRICAL PLUMBING CODE (IMC) AND THE INTERNATIONAL PLUMBING AND MECHANICAL CODE (IPMC) AS APPLICABLE TO THE PROJECT.  
 3. ALL WORK SHALL BE IN ACCORDANCE WITH THE LATEST EDITIONS OF THE INTERNATIONAL FIRE AND SAFETY CODE (IFSC) AND THE INTERNATIONAL FIRE AND SAFETY CODE (IFSC) AS APPLICABLE TO THE PROJECT.  
 4. ALL WORK SHALL BE IN ACCORDANCE WITH THE LATEST EDITIONS OF THE INTERNATIONAL CODE OF BOILER AND PRESSURIZED VESSEL CODE (IBR) AS APPLICABLE TO THE PROJECT.  
 5. ALL WORK SHALL BE IN ACCORDANCE WITH THE LATEST EDITIONS OF THE INTERNATIONAL CODE OF CONSTRUCTION (ICC) AS APPLICABLE TO THE PROJECT.

**GENERAL NOTES**

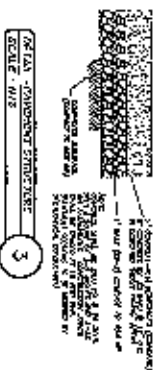
1. ALL WORK SHALL BE IN ACCORDANCE WITH THE LATEST EDITIONS OF THE INTERNATIONAL BUILDING CODE (IBC) AND THE INTERNATIONAL ENERGY CONSERVATION CODE (IECC) AS APPLICABLE TO THE PROJECT.
2. ALL WORK SHALL BE IN ACCORDANCE WITH THE LATEST EDITIONS OF THE INTERNATIONAL MECHANICAL AND ELECTRICAL PLUMBING CODE (IMC) AND THE INTERNATIONAL PLUMBING AND MECHANICAL CODE (IPMC) AS APPLICABLE TO THE PROJECT.
3. ALL WORK SHALL BE IN ACCORDANCE WITH THE LATEST EDITIONS OF THE INTERNATIONAL FIRE AND SAFETY CODE (IFSC) AND THE INTERNATIONAL FIRE AND SAFETY CODE (IFSC) AS APPLICABLE TO THE PROJECT.
4. ALL WORK SHALL BE IN ACCORDANCE WITH THE LATEST EDITIONS OF THE INTERNATIONAL CODE OF BOILER AND PRESSURIZED VESSEL CODE (IBR) AS APPLICABLE TO THE PROJECT.
5. ALL WORK SHALL BE IN ACCORDANCE WITH THE LATEST EDITIONS OF THE INTERNATIONAL CODE OF CONSTRUCTION (ICC) AS APPLICABLE TO THE PROJECT.



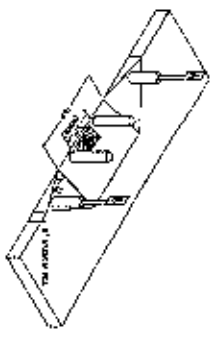
**DETAIL - DOOR, CORNER & JOINTS**  
 SCALE - 1/2" = 1'-0"



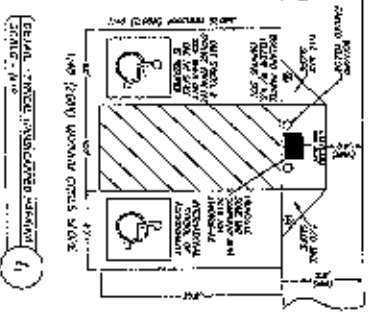
**DETAIL - TYPICAL DOWN SINGLES**  
 SCALE - 1/2" = 1'-0"



**DETAIL - JOIST-HANGER STRUCTURE**  
 SCALE - 1/2" = 1'-0"



BASED ON INFORMATION  
 PROVIDED BY THE ARCHITECT  
 AND THE CONTRACTOR.  
 THE ENGINEER HAS NOT  
 CONDUCTED A VISUAL  
 INSPECTION OF THE  
 WORK SHOWN ON THIS  
 PLAN AND SHALL NOT  
 BE RESPONSIBLE FOR  
 ANY ERRORS OR OMISSIONS  
 THEREIN.



**DETAIL - TYPICAL WORKSTATION SKETCH**  
 SCALE - 1/2" = 1'-0"



NO.	DESCRIPTION	DATE
1	ISSUED FOR PERMIT	11/15/11
2	ISSUED FOR CONSTRUCTION	11/15/11
3	ISSUED FOR AS-BUILT	11/15/11
4	ISSUED FOR FINAL REVIEW	11/15/11
5	ISSUED FOR RECORD	11/15/11