

<u>BUILDING A</u>	
DESCRIPTION	AREA (SF)
BUILDING DIMENSIONS	30X100
BUILDING FOOTPRINT	3,000SF
PARKING SPACES REQUIRED	ASSUME 24 TABLES * 4 SEATS =96/3 =32 SPACES
PARKING SPACES PROVIDED	39 SPACES

<u>BUILDING B</u>	
DESCRIPTION	AREA (SF)
BUILDING DIMENSIONS	130X52.4
BUILDING FOOTPRINT	6800SF
PARKING SPACES REQUIRED	6,800SF/300=23 SPACES
PARKING SPACES PROVIDED	39 SPACES

<u>BUILDING C</u>	
DESCRIPTION	AREA (SF)
BUILDING DIMENSIONS	70X50
BUILDING FOOTPRINT	3,500SF
PARKING SPACES REQUIRED	3,500SF/300=12 SPACES
PARKING SPACES PROVIDED	39 SPACES

<u>BUILDING D</u>	
DESCRIPTION	AREA (SF)
BUILDING DIMENSIONS	70X50
BUILDING FOOTPRINT	3,500SF
PARKING SPACES REQUIRED	3,500SF/300=12 SPACES
PARKING SPACES PROVIDED	50 SPACES

D:\01-018 SR 85 Commercial Subdivision\Drawings\PLANS\RD01.dwg, SITE, nck, Jul 09, 2021, 1:25:12pm

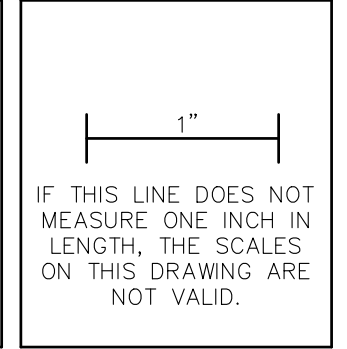
**AUG ALDAY-HOWELL ENGINEERING, INC.**  
 4100 S. FERDON BLVD, SITE B2  
 CRESTVIEW, FL 32556  
 PHONE (850) 634-6084 \* FAX (850) 526-4740  
 E-MAIL : info@aldayhowell.com  
 FLORIDA CERTIFICATE OF AUTHORIZATION. NO. 26105

REVISIONS		
DESCRIPTION	INITIALS	DATE

**CLIENT:**  
**TERRA EQUITIES, LLC**

**PROJECT:**  
**SR 85 COMMERCIAL SUBDIVISION**

**SHEET TITLE:**  
**SITE PAVING AND STRIPING PLAN**



NOT VALID UNLESS EMBOSSED

JOB NO. 21-008  
 DRAWN BY NMM  
 CHECKED BY JSF  
 DATE 7/9/21  
**SHEET 3**