

200 28th Street South  
 Birmingham, Al 35233  
 205.834.4711  
 www.lmopartners.com

A LANDSCAPE DEVELOPMENT FOR  
**Ross Bridge Village Retail Center**  
 Hoover, Alabama

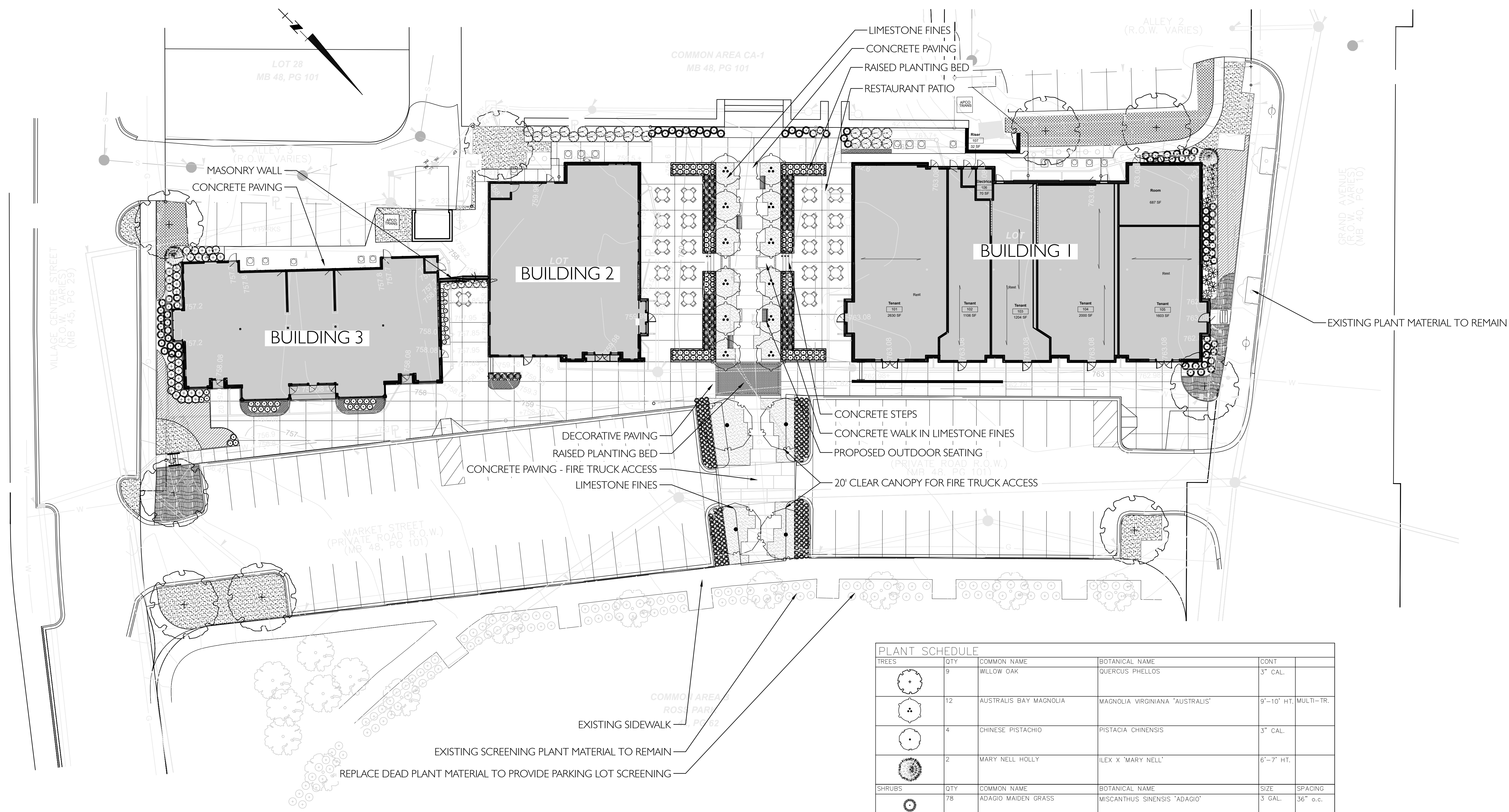


PROJ. CODE	17-027
DRAWN BY	DML/DEM
REVIEWED BY	ADO/DML
<b>ISSUED</b>	
DATE	DESCRIPTION
5-17-18	100% FOR SUBMITTAL
8-26-18	100% FOR PERMITTING

**REVISIONS**

CONSTRUCTION DOCUMENTS

SHEET  
 LI.1



PLANT SCHEDULE					
TREES	QTY	COMMON NAME	BOTANICAL NAME	CONT	
	9	WILLOW OAK	QUERCUS PHELLOS	3" CAL.	
	12	AUSTRALIS BAY MAGNOLIA	MAGNOLIA VIRGINIANA 'AUSTRALIS'	9"-10" HT.	MULTI-TR.
	4	CHINESE PISTACHIO	PISTACIA CHINENSIS	3" CAL.	
	2	MARY NELL HOLLY	ILEX X 'MARY NELL'	6"-7" HT.	
SHRUBS	QTY	COMMON NAME	BOTANICAL NAME	SIZE	SPACING
	78	ADAGIO MAIDEN GRASS	MISCANTHUS SINENSIS 'ADAGIO'	3 GAL.	36" o.c.
	112	'TUSCAN BLUE' ROSEMARY	ROSMARINUS OFFICINALIS 'TUSCAN BLUE'	3 GAL.	36" o.c.
	4	CREEPING FIG	FICUS PUMILA	1 GAL.	96" o.c.
	6	DWARF GREEN AUCUBA	AUCUBA JAPONICA 'NANA'	3 GAL.	36" o.c.
	10	COTONEASTER PARNEYI	COTONEASTER LACTEUS	3 GAL.	42" o.c.
	22	NEEDLEPOINT HOLLY	ILEX CORNUTA 'NEEDLEPOINT'	3 GAL.	36" o.c.
	69	PINK MUHLY GRASS	MUHLENBERGIA CAPILLARIS	3 GAL.	36" o.c.
	33	INDIAN HAWTHORN	RAPHIOLEPIS INDICA 'SNOW WHITE'	3 GAL.	36" o.c.
	164	WHITE MUHLY GRASS	MUHLENBERGIA CAPILLARIS 'WHITE CLOUD'	1 GAL.	24" o.c.
	13	DWARF GARDENIA	GARDENIA JASMINOIDES 'RADICANS'	3 GAL.	36" o.c.
	102	SHOWY JASMINE	JASMINUM FLORIDUM	3 GAL.	36" o.c.
GROUND COVERS	QTY	COMMON NAME	BOTANICAL NAME	CONT	SPACING
	2,369 SF	419 BERMUDA GRASS	CYNODON DACTYLON '419 HYBRID'	SOD	
	630	BLUE PACIFIC JUNIPER	JUNIPERUS CONFERTA 'BLUE PACIFIC'	1 GAL.	18" o.c.
	311	ASIATIC JASMINE	TRACHELOSPERMUM ASIATICUM 'ASIATIC'	1 GAL.	18" o.c.
	58	BIG BLUE LIRIOPE	LIRIOPE MUSCARI 'BIG BLUE'	4" POTS	10" o.c.

NOT FOR CONSTRUCTION -  
 SUBMITTAL ONLY

0 20 40 60 feet  
 SCALE: 1" = 20'

NORTH

**OVERALL LANDSCAPE PLAN**

THIS DRAWING IS THE PROPERTY OF LORBERBAUM McNAIR ODREZIN PARTNERS, LLC AND IS NOT TO BE REPRODUCED, COPIED, OR ALTERED IN WHOLE OR IN PART WITHOUT THE APPROVAL OF LORBERBAUM McNAIR ODREZIN PARTNERS. © LMO PARTNERS.