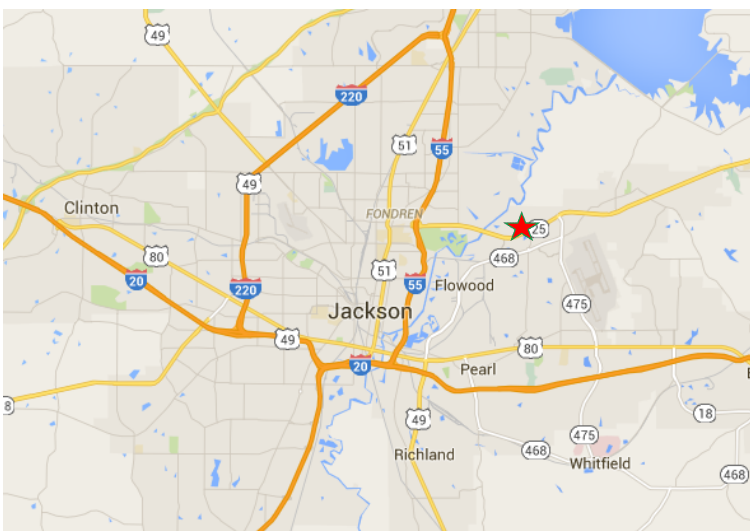
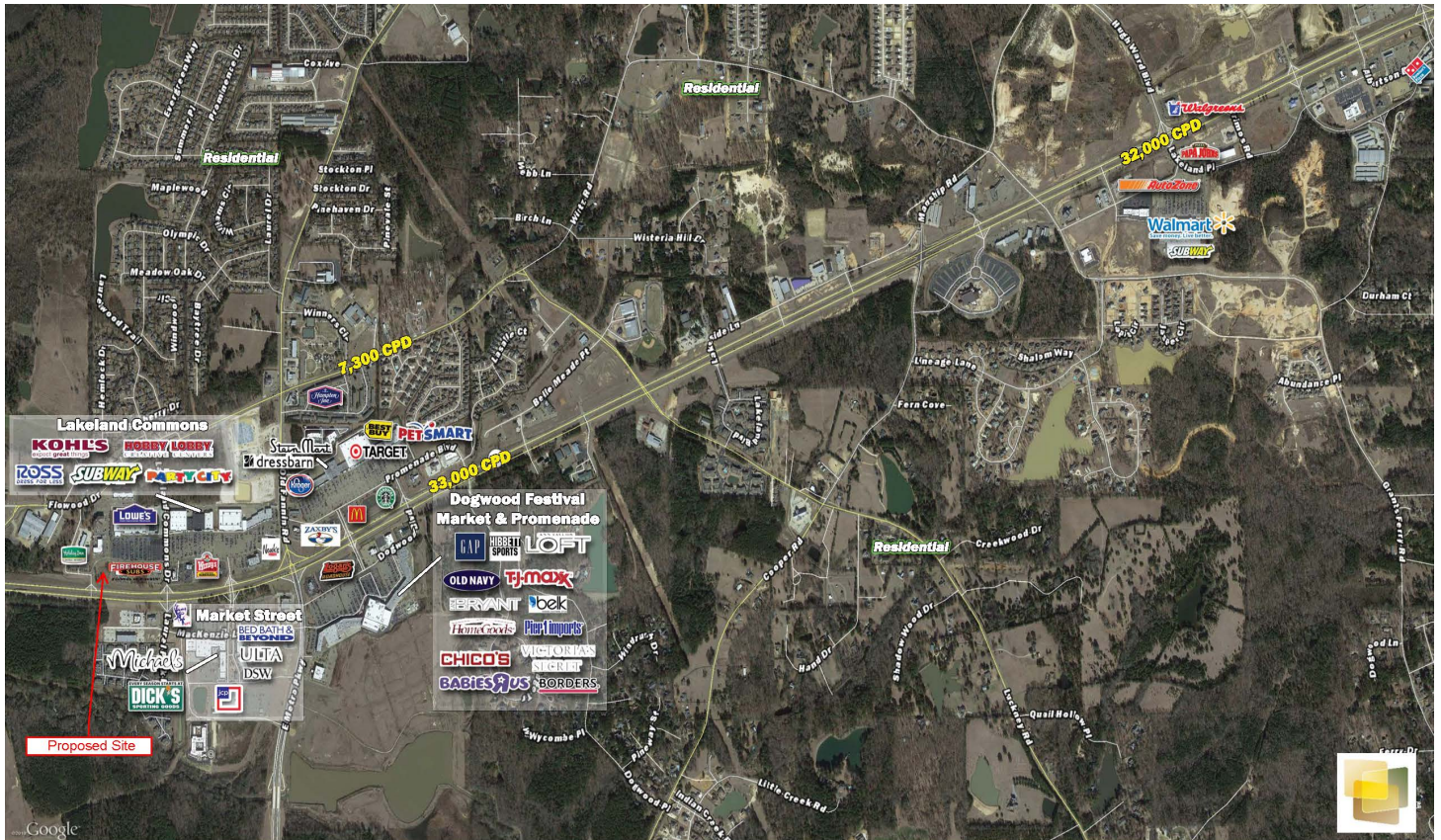


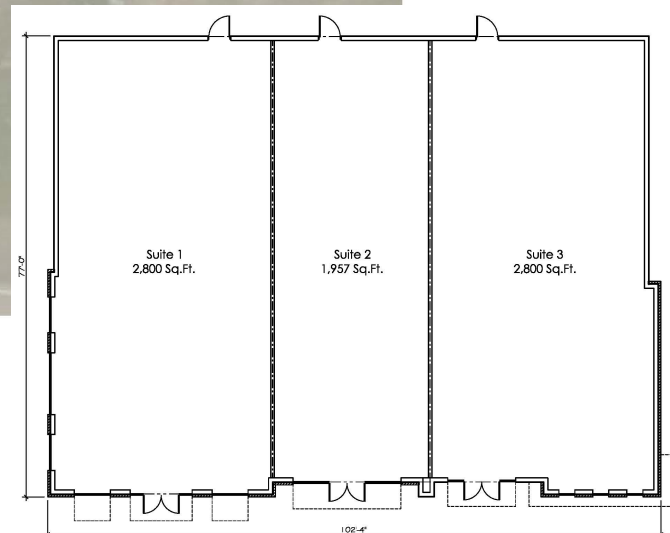
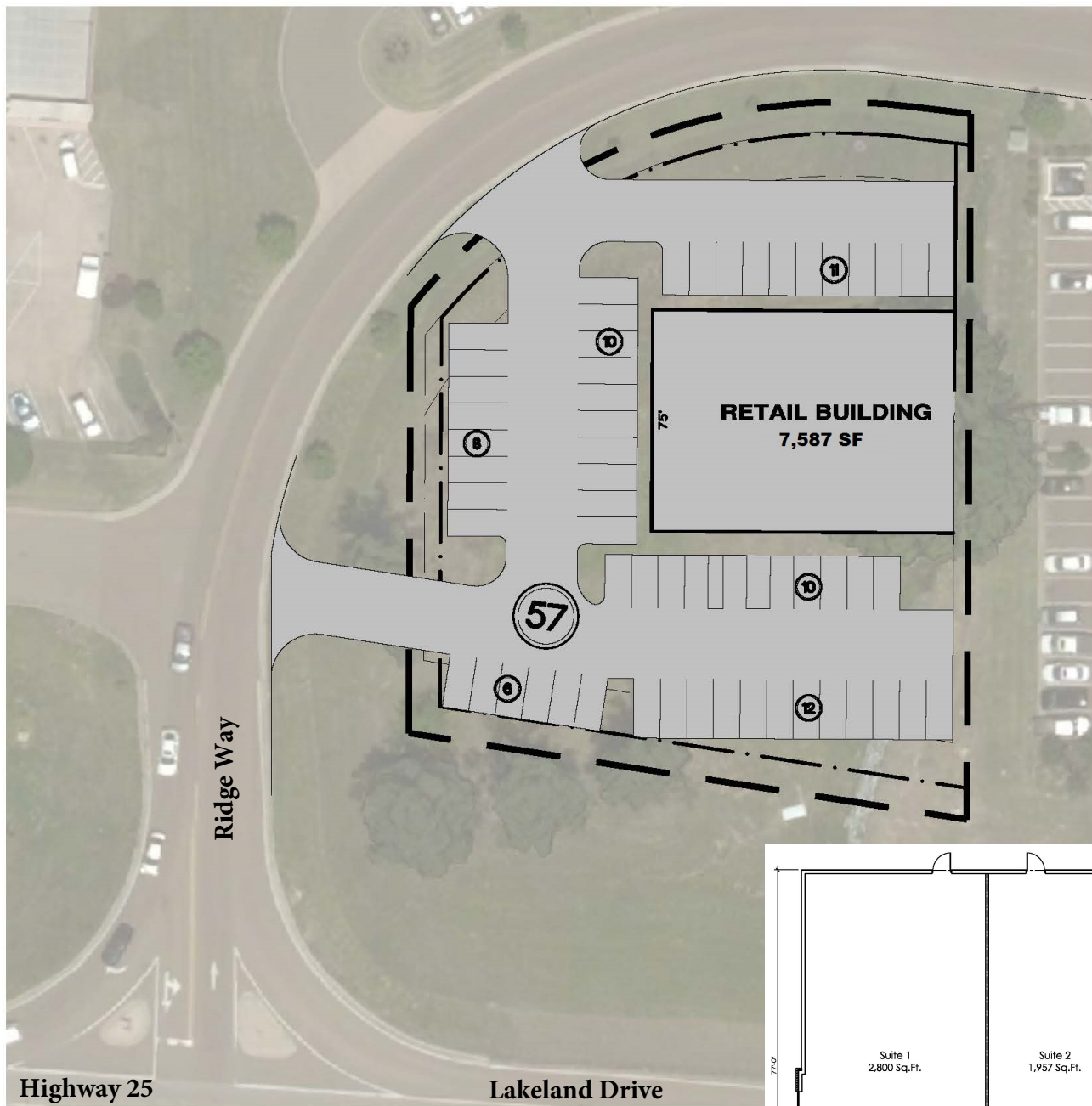
Flowood, Mississippi



PROPERTY HIGHLIGHTS

- 7,587 SF with 1,957 SF available
- City of Flowood
- Outparcel to Koh's and Lowe's anchored center. Surrounding tenants include Dick's, JcPenny's, Best Buy, Target, Belk, and Gap
- Traffic Count: 42,000 VPD on Hwy25

Contact: Allen Hawkins
205-862-7398
terraequities@gmail.com



DEMOGRAPHICS**	1-Mile	3-Miles	5-Miles
Population	2,684	16,547	70,908
Average HH Income	\$79,589	\$88,799	\$86,720
Households	1,195	7,140	29,970



Contact: Allen Hawkins
205-862-7398
terraequities@gmail.com