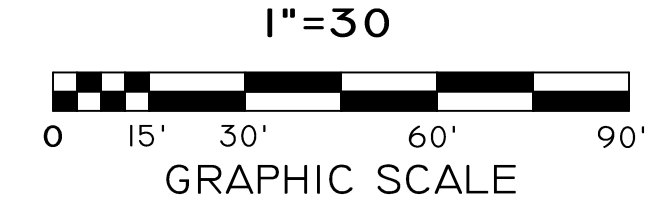
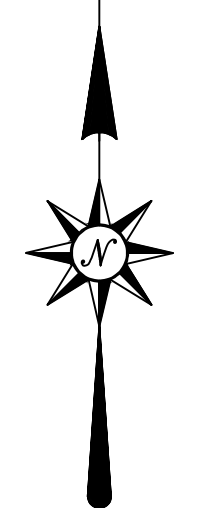
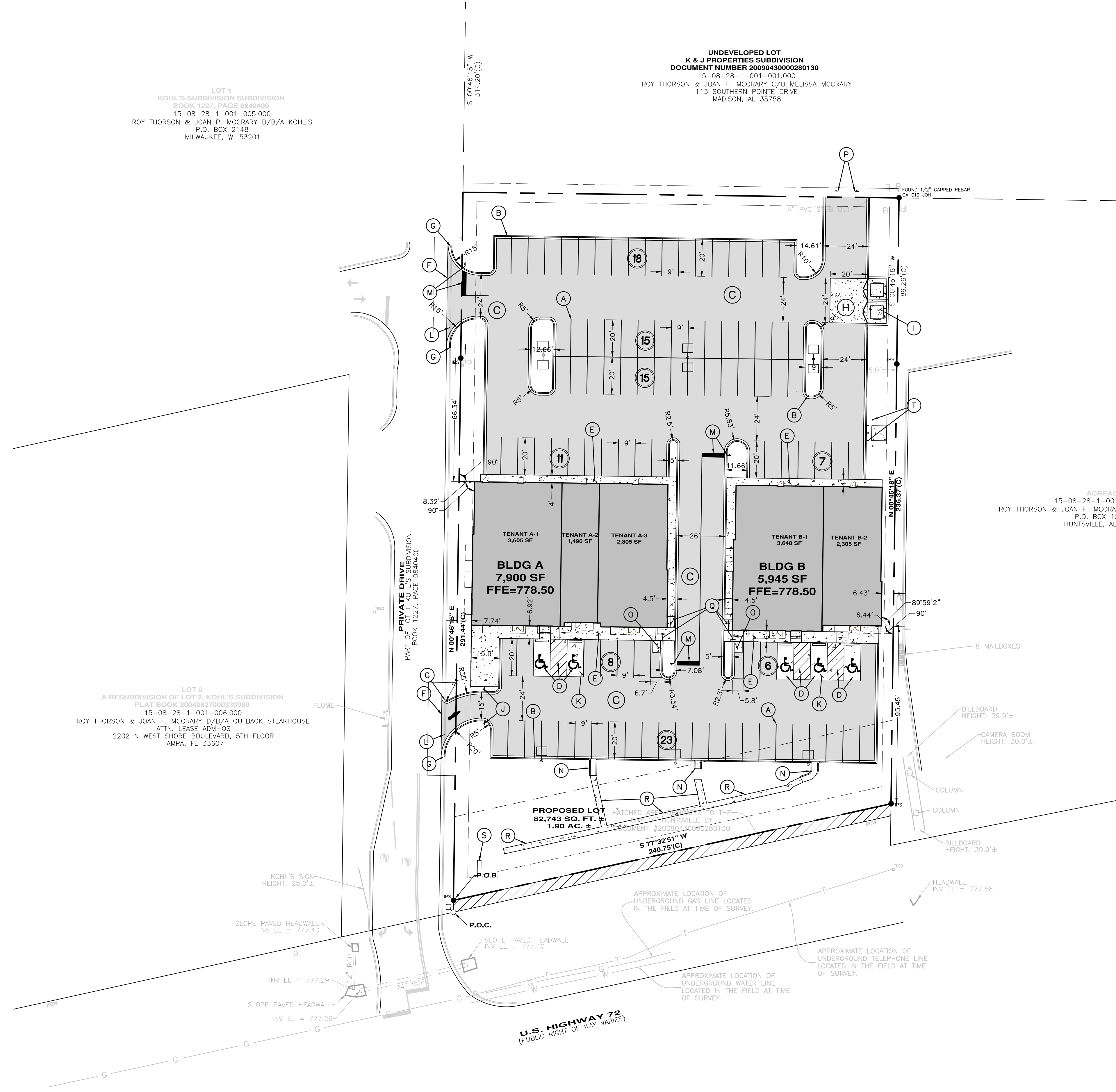


LOT 1
 KOHL'S SUBDIVISION SUBDIVISION
 BOOK 1227, PAGE 084600
 15-08-28-1-001-005.000
 ROY THORSON & JOAN P. MCCRARY D/B/A KOHL'S
 P.O. BOX 2148
 MILWAUKEE, WI 53201

UNDEVELOPED LOT
 K & J PROPERTIES SUBDIVISION
 DOCUMENT NUMBER 2009043000280130
 15-08-28-1-001-001.000
 ROY THORSON & JOAN P. MCCRARY C/O MELISSA MCCRARY
 113 SOUTHERN POINTE DRIVE
 MADISON, AL 35758

LOT 2
 A RESUBDIVISION OF LOT 2, KOHL'S SUBDIVISION
 PLAT BOOK 20040827000289960
 15-08-28-1-001-006.000
 ROY THORSON & JOAN P. MCCRARY D/B/A OUTBACK STEAKHOUSE
 ATTN: LEASE ADM-OS
 2202 N WEST SHORE BOULEVARD, 5TH FLOOR
 TAMPA, FL 33607



SITE LEGEND

- (A) 4" WHITE PAINTED PARKING STRIPE REQUIRED. - TYPICAL
- (B) 18" CONCRETE CURB AND GUTTER REQUIRED. -TYPICAL- SEE DETAILS
- (C) STANDARD DUTY ASPHALT PAVING REQUIRED. - TYPICAL - SEE DETAIL
- (D) ACCESSIBLE PARKING SPACE, TYPE A ACCESSIBLE RAMP, SIGN, SYMBOL, WHEELSTOPS AND ACCESS AISLE. SEE DETAIL - TYPICAL
- (E) TURNDOWN CONCRETE SIDEWALK REQ'D. SEE DETAILS.
- (F) TIE TO EXISTING ASPHALT, ASSURING A SMOOTH TRANSITION AND POSITIVE DRAINAGE.
- (G) TIE TO EXISTING CURB AND GUTTER, ASSURING A SMOOTH TRANSITION AND POSITIVE DRAINAGE.
- (H) HEAVY DUTY CONCRETE PAVING REQ'D. SEE DETAILS.
- (I) DUMPSTER PAD REQ'D. REFER TO ARCHITECTURAL PLANS FOR ADDITIONAL DETAILS.
- (J) R5-1 "DO NOT ENTER" SIGN REQ'D.
- (K) STANDARD DUTY CONCRETE PAVING REQ'D. SEE DETAILS.
- (L) SAWCUT & REMOVE EXISTING CURB & GUTTER & ASPHALT.
- (M) R-1 STOP SIGN AND STOP BAR REQ'D. SEE DETAILS. (TYP)
- (N) 3' WIDE CONCRETE FLUME REQ'D. SEE DETAILS. (TYP)
- (O) INVERTED "U" TYPE BICYCLE RACK ON SIDEWALK REQ'D. RACK SHALL BE AN APPROVED MANUFACTURER AND DESIGN OF THE CITY OF HUNTSVILLE AND INSTALLED PER MANUFACTURER'S RECOMMENDATIONS. RACK SHALL BE INSTALLED ON CONCRETE SIDEWALK.
- (P) OM4-1 OR OM4-2 TYPE 4 OBJECT MARKER (END OF ROADWAY) SIGNS REQ'D.
- (Q) TYPE B ACCESSIBLE RAMP REQ'D. - SEE DETAIL.
- (R) 3' WIDE FLUSH CONCRETE GUTTER REQ'D ALONG BOTTOM EDGE OF DETENTION POND AND FROM ENDS OF FLUMES/HEADWALLS.
- (S) COORDINATE FINAL SIGN LOCATION WITH OWNER.
- (T) 6" REMOVABLE PIPE BOLLARD REQ'D, TYP. SEE DETAILS.

PARKING DATA
 PARKING PROVIDED: 103 SPACES

LEGEND

---	EXISTING STORM SEWER
---	EXISTING BUILDING LINE
---	PROPOSED BUILDING LINE
---	EXISTING IMPROVEMENTS
---	EXISTING CURB AND GUTTER
---	PROPOSED CURB AND GUTTER
---	PROPERTY LINE
---	EXISTING PAINT STRIPING
---	PROPOSED IMPROVEMENTS
---	FENCE
---	EASEMENT LINE
---	SETBACK LINE
---	EXISTING FLOW
---	EXISTING CONTOURS
---	PROPOSED CONTOURS
---	PROPOSED FLOW
---	PROPOSED STORM SEWER
---	PROPOSED SANITARY SEWER
---	PROPOSED TELEPHONE
---	PROPOSED POWER
---	PROPOSED WATER
---	PROPOSED GAS LINE
---	EXISTING SANITARY SEWER
---	EXISTING TELEPHONE
---	EXISTING POWER
---	EXISTING WATER
---	EXISTING GAS LINE
---	EXISTING ELEVATION
---	PROPOSED ELEVATION
---	SANITARY SEWER CLEANOUT
---	WATER METER
---	WATER VALVE
---	WATER FACET
---	FIRE HYDRANT
---	POWER POLE
---	LIGHT POLE

NO.	REVISIONS	DESCRIPTION	DATE

SITE LAYOUT PLAN

RIDGESIDE STATION
 HIGHWAY 72
 HUNTSVILLE, ALABAMA

TERRA EQUITIES, LLC
 BIRMINGHAM, ALABAMA

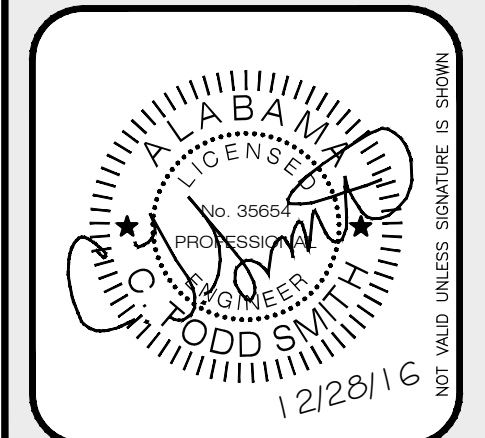
DWN. BY: C.T. SMITH, P.E.
 CKD. BY: B. HARRIS, P.E.

SCALE: 1"=30'
 DATE: 8/30/16

GONZALEZ - STRENGTH & ASSOCIATES, INC.
 CIVIL ENGINEERING, LAND SURVEYING, PLANNING, TRAFFIC & TRANSPORTATION

2176 PARKWAY LAKE DRIVE
 HOOPER, ALABAMA 35244
 PHONE: (205) 942-3286
 FAX: (205) 942-3231
 www.Gonzalez-Strength.com

© Copyright 2006



DWG. NO.
C1 - R0

PROJECT
16TEQ30

X:\2016 Projects\16teq30-Real-Development-Hwy 72-Huntsville AL\Engineering\Construction Documents\16TEQ30 12-20-2016.dwg Dec 28, 2016 10:25 am

THIS DRAWING IS THE PROPERTY OF GONZALEZ - STRENGTH & ASSOCIATES, INC. AND IS NOT TO BE REPRODUCED OR ALTERED IN WHOLE OR PART OR USED FOR ANY PURPOSE WITHOUT THE APPROVAL OF GONZALEZ - STRENGTH & ASSOCIATES, INC. AND TO BE RETURNED UPON REQUEST.